

DATE: 3/12/2021 10:40 AM PROJECT: YELLIN TRAILER PARKING LOT SHEET: 1C-001

PROJECT: YELLIN TRAILER PARKING LOT

DATE: 3/12/2021 10:40 AM PROJECT: YELLIN TRAILER PARKING LOT SHEET: 1C-001

DATE: 3/12/2021 10:40 AM PROJECT: YELLIN TRAILER PARKING LOT SHEET: 1C-001

GENERAL CIVIL ENGINEERING LEGEND

Table with columns: EXISTING, PROPOSED, DESCRIPTION. Lists various engineering symbols and their corresponding descriptions for civil engineering elements like property lines, fences, retaining walls, etc.

APPLICABLE CODES

TOWN OF KILLINGLY ORDINANCE NUMBER: XXXX.XX
2004 CONNECTICUT STORMWATER QUALITY MANUAL
CONNECTICUT DEPARTMENT OF ENERGY AND ENVIRONMENTAL PROTECTION
2010 AMERICANS WITH DISABILITIES ACT (ADA) STANDARDS FOR ACCESSIBLE DESIGN

GLOSSARY

REMOVE: DEMOLISH AND HAUL OFF-SITE TO APPROVED SOLID WASTE FACILITY
INSTALL: PROVIDE ALL MISCELLANEOUS MATERIALS & SERVICES (LABOR & MATERIAL)
PROVIDE: FURNISH & INSTALL
REMARKS: INFORMATION PERTAINING TO ALL ITEMS ON A SCHEDULE
NOTES: INFORMATION PERTAINING ONLY TO INDICATED ITEMS ON A PLAN
SALVAGE: REMOVE AND RETURN TO OWNER FOR REUSE

SITE PLAN REVIEW PLANS FOR: YELLIN TRAILER PARKING LOT

DAYVILLE, WINDHAM COUNTY, CONNECTICUT



REVISED SITE PLAN REVIEW - TOWN OF KILLINGLY 03/12/2021

GENERAL NOTES

- 1. PRIOR TO THE START OF CONSTRUCTION THE CONTRACTOR SHALL INSTALL (AND MAINTAIN DURING CONSTRUCTION) ALL SEDIMENT CONTROL MEASURES AS NECESSARY TO RETAIN SEDIMENTS ON THE SITE.
2. CONTRACTOR SHALL MAINTAIN RED-LINE DRAWINGS DURING CONSTRUCTION WHICH SHOW "AS-BUILT" CONDITIONS OF ALL WORK INCLUDING PIPING, DRAINAGE STRUCTURES, TOPO OF POND(S), OUTLET STRUCTURES, DIMENSIONS, ELEVATIONS, GRADING, ETC.
3. ALL CONSTRUCTION SHALL BE EXECUTED AS SHOWN ON THESE PLANS. ANY REVISIONS AND/OR DEVIATIONS MUST BE APPROVED THROUGH THE ENGINEER OF RECORD AND MAY RESULT IN ADDITIONAL PERMITTING EFFORTS THROUGH THE RELATED PERMITTING AGENCY.

DESIGN CRITERIA

SIZE AREA: 15.20 AC
DISTRIBUTED AREA: 12.90 AC
LATITUDE: 41°51'44.04"N
LONGITUDE: 71°53'27.53"W
FINISHED FLOOR ELEVATION: F.F.E.=283.00'
FLOOD PLAIN: "ZONE X"
FIRM MAP NUMBER: 090136 0004 B EFFECTIVE DATE 01/03/1985
ZONING: XX-XXA
PROJECT USE: INDUSTRIAL
HYDRAULIC SOIL GROUP: A, B, AND B / D
DOWNSTREAM WATER BODY: FIVE MILE CREEK

VICINITY MAP

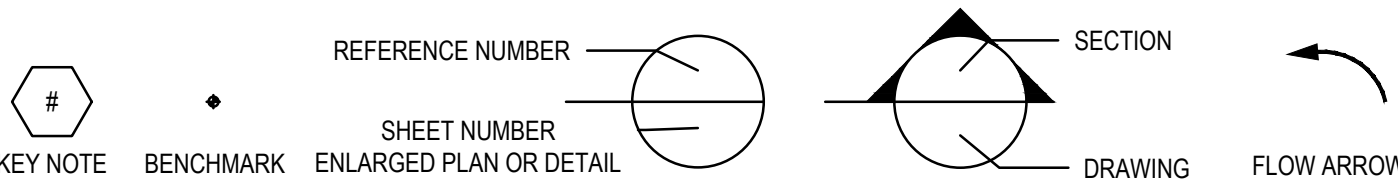


SHEET INDEX

CIVIL SHEET INDEX

Table with columns: Sheet Number, Sheet Title. Lists sheet numbers and titles such as 1C-001 COVER SHEET, 1C-100 EXISTING CONDITIONS, etc.

CALLOUTS



ABBREVIATIONS

Table with columns: ABBREVIATION, DESCRIPTION. Lists abbreviations like AD AREA DRAIN, ALT ALTERNATE, APPROX APPROXIMATE, etc.

SIGNATURE BLOCK

CONTACT INFORMATION

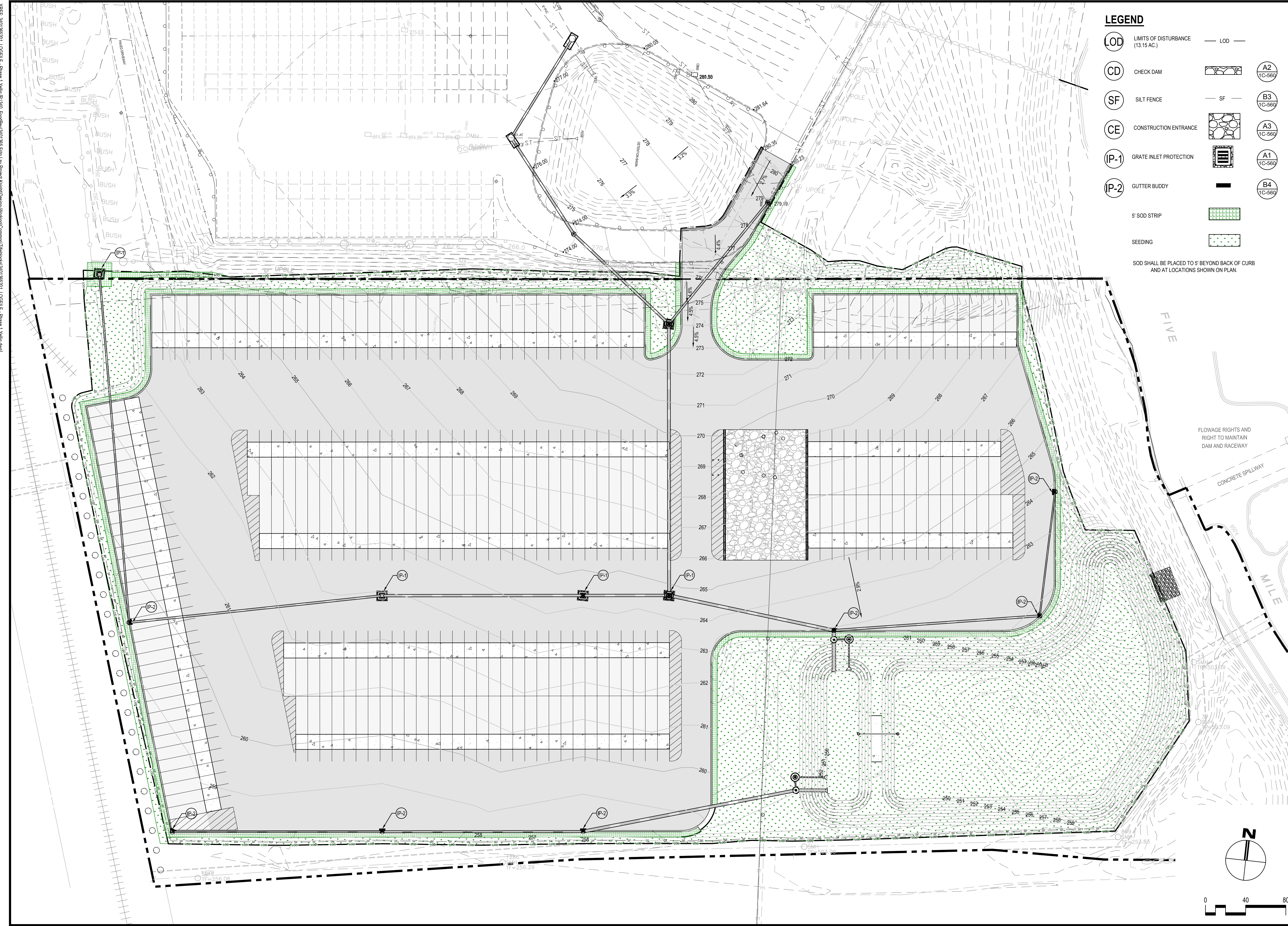
ENGINEER-OF-RECORD: JOSHUA R. HOUGH
LICENSE NUMBER: PEN.0031834
HASKELL ARCHITECTS AND ENGINEERS, P.C.
111 RIVERSIDE AVENUE JACKSONVILLE, FL 32202
(904) 791-4744
JOSHUA.HOUGH@HASKELL.COM

ONE CALL SYSTEM



Professional Engineer Seal for Joshua R. Hough, License No. 0031834. Company logo for Haskell Architects and Engineers, P.C. Project title: YELLIN TRAILER PARKING LOT. Contact info: 111 Riverside Avenue, Jacksonville, Florida 32202, Phone # (904) 791-4500. Frito Lay Good Fun! logo. Contact table with columns: No, DESCRIPTION, DATE. One call system disclaimer. Drawn by: SBC/MSL, Checked by: JRH. AE JOB NUMBER: 3401365. COVER SHEET. 1C-001 SHEET NUMBER.

P:\340_FoodBev\3401365 Frito Lay Project\KnightDesign\Working\Civil\AubCAD\06_Sheet Files\PHASE 1\YELLIN LOT\3401362\01_1C-162.dwg Layout Name: 1C-162 Mar 12, 2021 - 10:45am PLOTTED BY: MSJ_ymj
 XREF: 3401362\01\LOGFILE - Phase 1 Vellin.dwg
 XREF: 3401362\01\CM21 L\05 Model FreshPhase 1 Vellin Lot\3401362\01\CM21.dwg
 XREF: 3401362\01\CM42 L\05 Model FreshPhase 1 Vellin Lot\3401362\01\CM42.dwg
 XREF: 3401362\01\CM41 L\05 Model FreshPhase 1 Vellin Lot\3401362\01\CM41.dwg
 XREF: 3401362\01\CM41-VELLEIN L\05 Model FreshPhase 1 Vellin Lot\3401362\01\CM41-VELLEIN.dwg
 XREF: 3401362\01\CM42-VELLEIN L\05 Model FreshPhase 1 Vellin Lot\3401362\01\CM42-VELLEIN.dwg



LEGEND

- (LOD) LIMITS OF DISTURBANCE (13.15 AC.) — LOD —
- (CD) CHECK DAM (A2) (TC-560)
- (SF) SILT FENCE — SF — (B3) (TC-560)
- (CE) CONSTRUCTION ENTRANCE (A3) (TC-560)
- (IP-1) GRATE INLET PROTECTION (A1) (TC-560)
- (IP-2) GUTTER BUDDY (B4) (TC-560)
- 5' SOD STRIP
- SEEDING

SOD SHALL BE PLACED TO 5' BEYOND BACK OF CURB AND AT LOCATIONS SHOWN ON PLAN.

HASKELL ARCHITECTS and ENGINEERS, P.C.
 CONNECTICUT - Architecture and Engineering # 0000056

HASKELL

YELLIN TRAILER PARKING LOT

FINAL EROSION AND SEDIMENT CONTROL PLAN

1C-162
SHEET NUMBER

The Haskell Company
 111 Riverside Avenue
 Jacksonville, Florida 32202
 Phone # (904) 791-4500

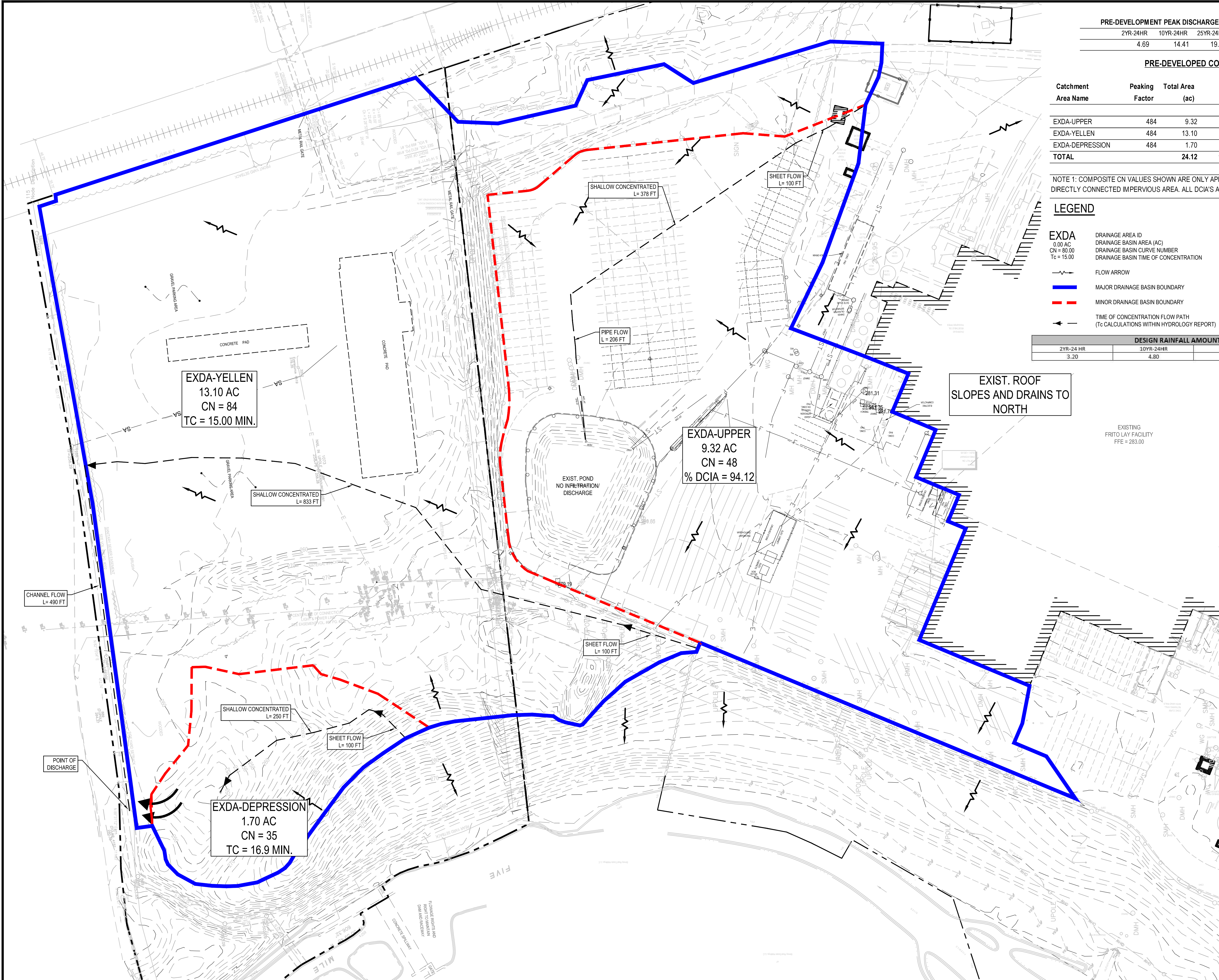
No	DESCRIPTION	DATE
K	CRPI	03/12/21
I	CPI, EVER	02/16/21
G	CPI	01/21/21

We hereby expressly reserve the property rights to this drawing and it is not to be reproduced, copied in any format or manner whatsoever without first obtaining our express written permission and consent.

DRAWN BY: SBC/MSL CHECKED BY: JRH
 AE JOB NUMBER: 3401365

XREF: 3401365201.LOGRITE - Phase 1 Vain P 340 Foodbev3401365 Frito Lay Project KnightDesign Working Common\1166666666\3401365201.LOGRITE - Phase 1 Vain.dwg
 XREF: 3401365201.CM 71 LUS Model FreshPhase 1 Vain Lot3401365201.CM 71.dwg
 XREF: 3401365201.CM 01 LUS Model FreshPhase 1 Vain Lot3401365201.CM 01.dwg
 XREF: 3401365201.CM 01 LUS Model FreshPhase 1 Vain Lot3401365201.CM 01.dwg

P:340_Foodbev3401365 Frito Lay Project KnightDesign Working\Civil\AubCAD\06 Sheet Files\PHASE 1 YELLIN.LOT3401365201_1C-170.dwg Layout Name: 1C-170 Mar 12, 2021 - 10:45am PLOTTED BY: MSJ,ymjs



PRE-DEVELOPMENT PEAK DISCHARGE (SOUTH BASIN), CFS

2YR-24HR	10YR-24HR	25YR-24HR	100YR-24HR
4.69	14.41	19.40	30.18

PRE-DEVELOPED CONDITIONS

Catchment Area Name	Peaking Factor	Total Area (ac)	Impervious		T _c (min)
			(ac)	% DCIA	
EXDA-UPPER	484	9.32	8.8	94.12	48
EXDA-YELLEN	484	13.10	5.71	-	62.46
EXDA-DEPRESSION	484	1.70	-	-	32.00
TOTAL		24.12	14.48		

NOTE 1: COMPOSITE CN VALUES SHOWN ARE ONLY APPLIED TO THE AREAS NOT CONSIDERED DIRECTLY CONNECTED IMPERVIOUS AREA. ALL DCIA'S ARE ASSIGNED A CN VALUE OF 98.

- LEGEND**
- EXDA: DRAINAGE AREA ID, DRAINAGE BASIN AREA (AC), DRAINAGE BASIN CURVE NUMBER, DRAINAGE BASIN TIME OF CONCENTRATION
 - Flow Arrow: FLOW ARROW
 - Blue Line: MAJOR DRAINAGE BASIN BOUNDARY
 - Red Line: MINOR DRAINAGE BASIN BOUNDARY
 - Black Arrow: TIME OF CONCENTRATION FLOW PATH (T_c CALCULATIONS WITHIN HYDROLOGY REPORT)

DESIGN RAINFALL AMOUNTS (INCHES)

2YR-24 HR	10YR-24HR	25YR-24HR	100YR-24HR
3.20	4.80	5.50	6.90

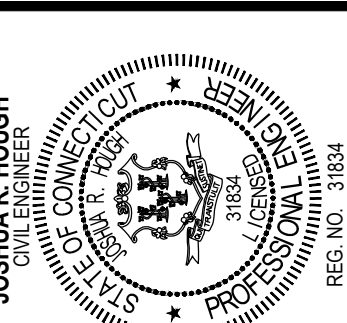
EXDA-YELLEN
13.10 AC
CN = 84
TC = 15.00 MIN.

EXDA-UPPER
9.32 AC
CN = 48
% DCIA = 94.12

EXDA-DEPRESSION
1.70 AC
CN = 35
TC = 16.9 MIN.

EXIST. ROOF SLOPES AND DRAINS TO NORTH

EXISTING FRITO LAY FACILITY
FFE = 283.00



HASKELL ARCHITECTS and ENGINEERS, P.C.
 CONNECTICUT - Architecture and Engineering # 0000056
HASKELL
 The Haskell Company
 111 Riverside Avenue
 Jacksonville, Florida 32202
 Phone # (904) 791-4500

**YELLIN TRAILER
PARKING LOT**



No	DESCRIPTION	DATE
K	CRPI	03/12/21
I	CPI_EVER	02/16/21
G	CPI	01/21/21

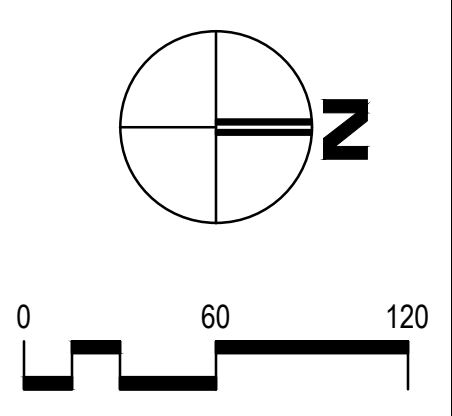
We hereby expressly reserve the property rights to this drawing and it is not to be reproduced, copied in any format or manner whatsoever without first obtaining our express written permission and consent.

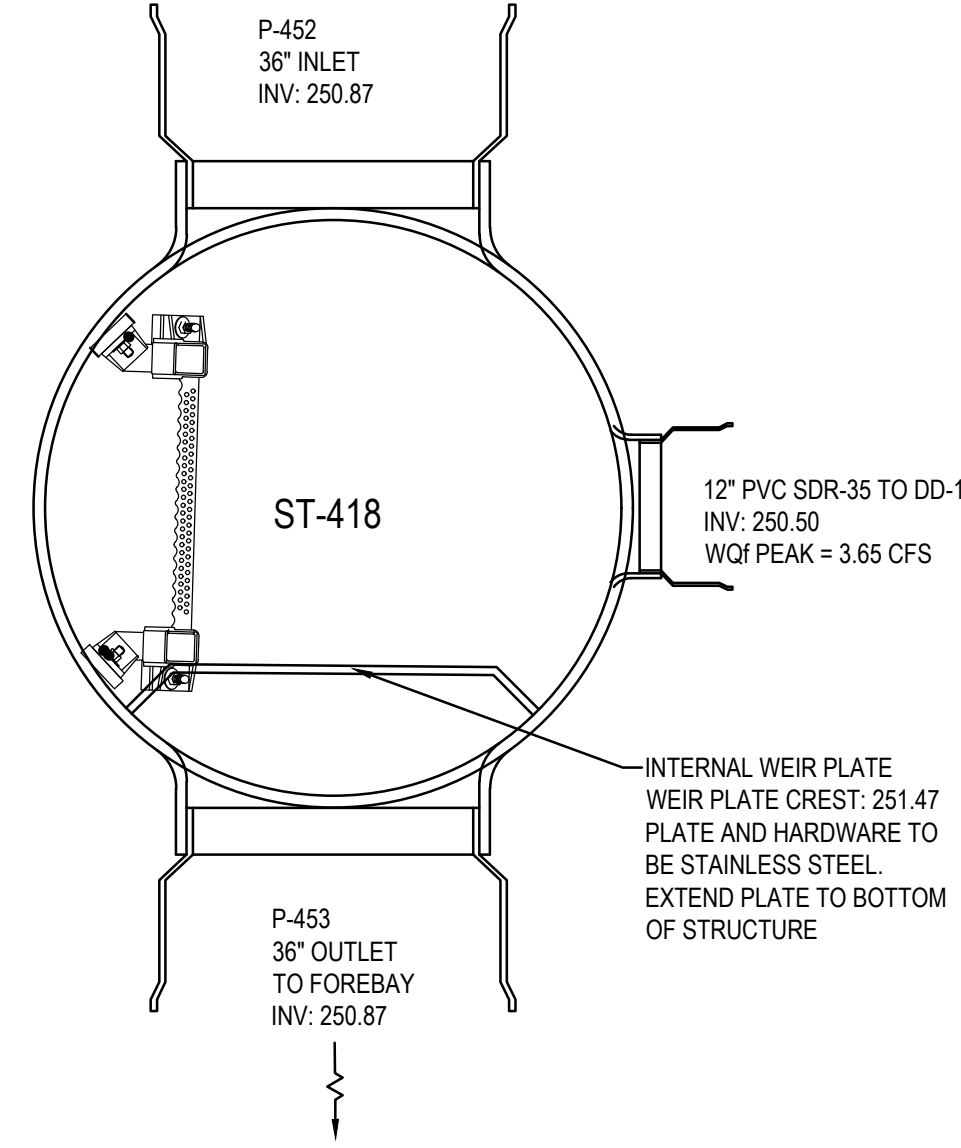
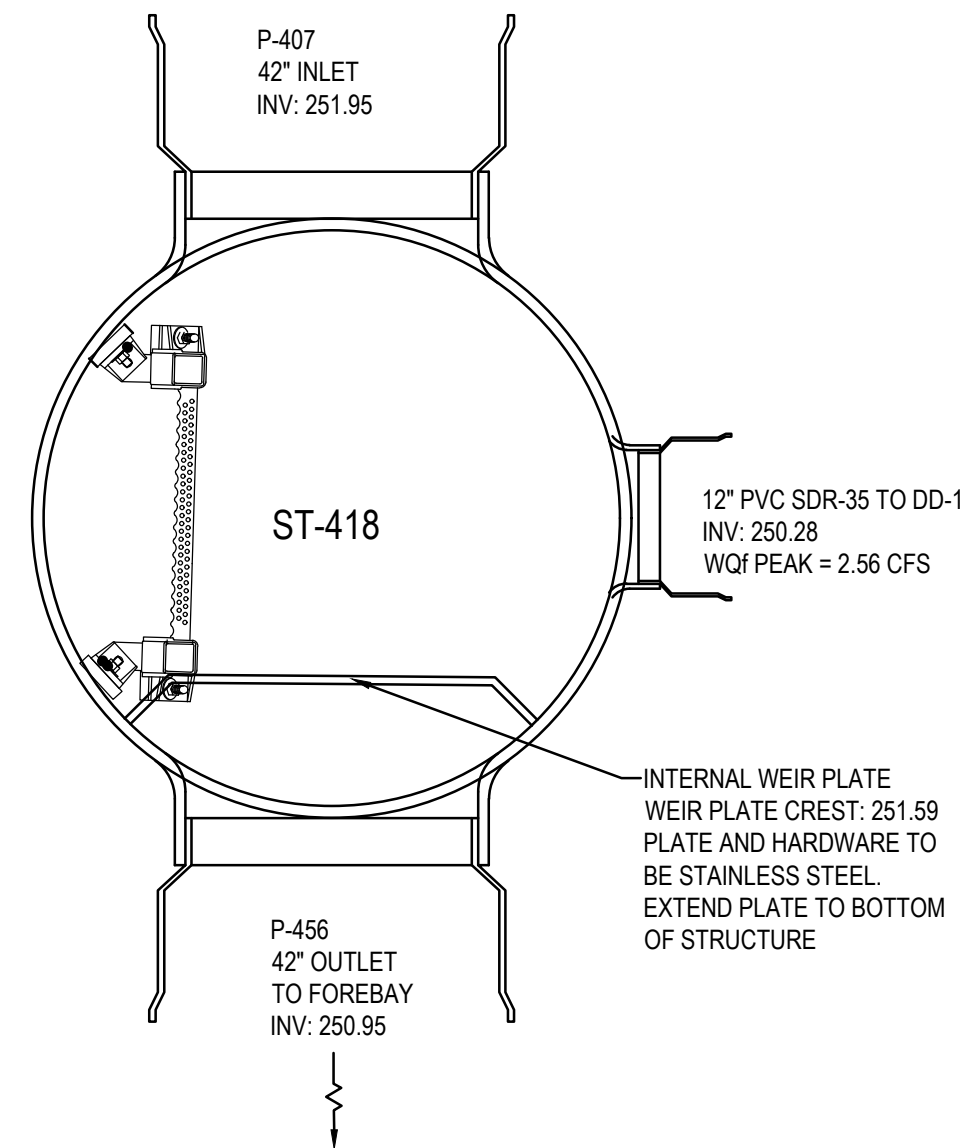
DRAWN BY: SBC/MSL CHECKED BY: JRH

AE JOB NUMBER: 3401365

PRE DEVELOPMENT DRAINAGE MAP

1C-170
SHEET NUMBER





LOCATION	MATERIAL DESCRIPTION	LIFT THICKNESS LOOSE	TEST METHOD FOR MAX. DRY DENSITY	COMPACTION	MOISTURE CONTENT (% POINTS)
DENSE GRADED (DGA) AGGREGATE BASE COURSE	Aggregate base meeting the material requirements of Standard Specifications of Connecticut Department of Transportation	Placed according to Section M.05, Connecticut DOT Std. Specifications	Placed according to Section M.05, Connecticut DOT Std. Specifications	Placed according to Section M.05, Connecticut DOT Std. Specifications	Placed according to Section M.05, Connecticut DOT Std. Specifications.
STRUCTURAL FILL: Building areas Pavement areas	On-site transfer material USCS Classification: SW, SP, SM, GW, GP, GM, GC or other combinations thereof meeting the following criteria: Max Dry Density $\geq 100\text{pcf}$ Plasticity Index (PI) ≤ 25 Liquid Limit (LL) ≤ 50	8 Inches	Modified Proctor (ASTM D 1557)	95 % (Top 12" @ 98 %) (See Note)	+/- 3%
GENERAL FILL: To 12" below pavement base layer Not in building areas	On-site transfer material USCS Classification: SW, SP, SM, GW, GP, GM, GC or other combinations thereof	8 Inches	Modified Proctor (ASTM D 1557)	95 % (Top 12" @ 98 %) (See Note)	+/- 3%
TOP SOIL	USCS Classification: CL, ML, SC, OH or other combinations thereof.	8 Inches	Modified Proctor (ASTM D 1557)	90 % (Top 12" @ 95 %)	+/- 3%

- NOTES:
- TEST FREQUENCY IS IDENTIFIED IN PROJECT SPECIFICATION SECTION 312000 - EARTH MOVING.
 - MATERIAL DESCRIPTIONS APPLY TO ON-SITE AND OFF-SITE MATERIALS.
 - CHANGES TO THE ABOVE CRITERIA CAN ONLY BE MADE WITH APPROVAL OF ENGINEER.
 - FILL DEPTHS IN EXCESS OF 10 FEET SHALL REQUIRE COMPACTION TO NOT LESS THAN 98% MODIFIED PROCTOR TO CONTROL SETTLEMENT OF DEEPER FILL MASSES.

C1 DIVERSION STRUCTURE ST-418

DETAIL NOT TO SCALE

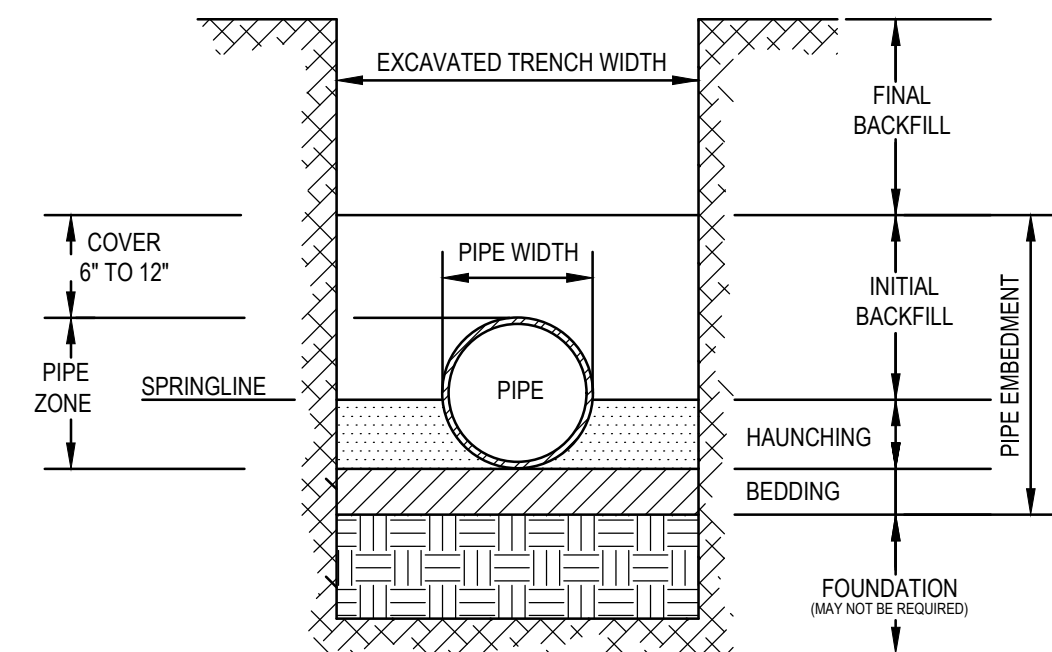
C2 DIVERSION STRUCTURE ST-453

DETAIL NOT TO SCALE

C3 SUMMARY OF FILL PLACEMENT DETAIL

DETAIL NOT TO SCALE

LOCATION	MATERIAL DESCRIPTION	MAX. LOOSE LIFT THICKNESS	TEST METHOD FOR MAX. DRY DENSITY	COMPACTION (%)	MOISTURE CONTENT (% POINTS)
PIPE BEDDING & HAUNCHING	Natural or Blended On-site Soil USCS Classification: SW, SP, SM, GW, GP, GM, GC or combinations thereof meeting the following criteria: Max Particle Size = 2 inches Max Plasticity Index = Less than 20 Max Liquid Limit(LL) = 40 Max Organic Content = 3%	8 inches	Modified Proctor (ASTM D 1557)	95%	± 3%
PIPE INITIAL BACKFILL	Natural or Blended On-site Soil USCS Classification: or combinations thereof meeting the following criteria: Max Particle Size = 2 inches Max Plasticity Index = Less than 20 Max Liquid Limit(LL) = 40 Max Organic Content = 3%	8 inches	Modified Proctor (ASTM D 1557)	95% (See Note)	± 3%
PIPE FINAL BACKFILL (ABOVE PIPE TO SUBGRADE) IN NON-PAVEMENT AREAS	Natural or Blended On-site Soil USCS Classification: or combinations thereof meeting the following criteria: Max Particle Size = 2 inches Max Plasticity Index = Less than 20 Max Liquid Limit(LL) = 40 Max Organic Content = 3%	8 inches	Modified Proctor (ASTM D 1557)	95% (See Note)	± 3%
PIPE FINAL BACKFILL (ABOVE PIPE TO SUBGRADE) IN PAVEMENT AREAS	SAME AS ABOVE	8 inches	Modified Proctor (ASTM D 1557)	98% (TOP 12")	± 3%



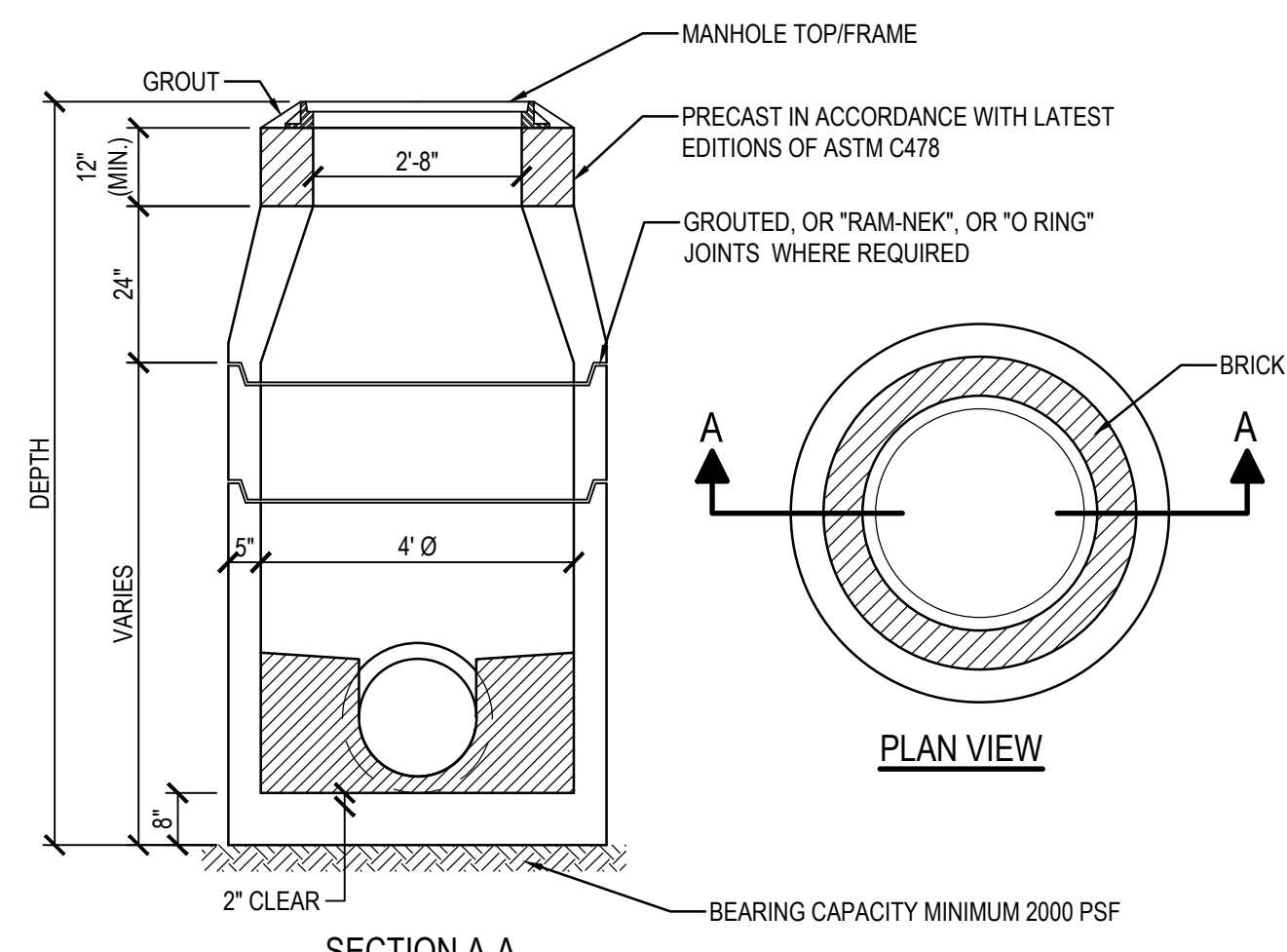
TRENCH CROSS-SECTION

GENERAL NOTES:

- TESTING FREQUENCY IS IDENTIFIED IN PROJECT SPECIFICATION 312000 - EARTH MOVING, SECTION 3.20.
- CHANGES TO THE ABOVE CRITERIA CAN ONLY BE MADE WITH APPROVAL OF ENGINEER.
- FILL DEPTHS IN EXCESS OF 10 FEET SHALL REQUIRE COMPACTION TO NOT LESS THAN 98% MODIFIED PROCTOR TO CONTROL SETTLEMENT OF DEEPER FILL MASSES.

B1 SUMMARY OF UTILITY / STORM TRENCH & BEDDING DETAIL - (PRIVATE USE ONLY - NOT FOR PUBLIC IMPROVEMENTS)

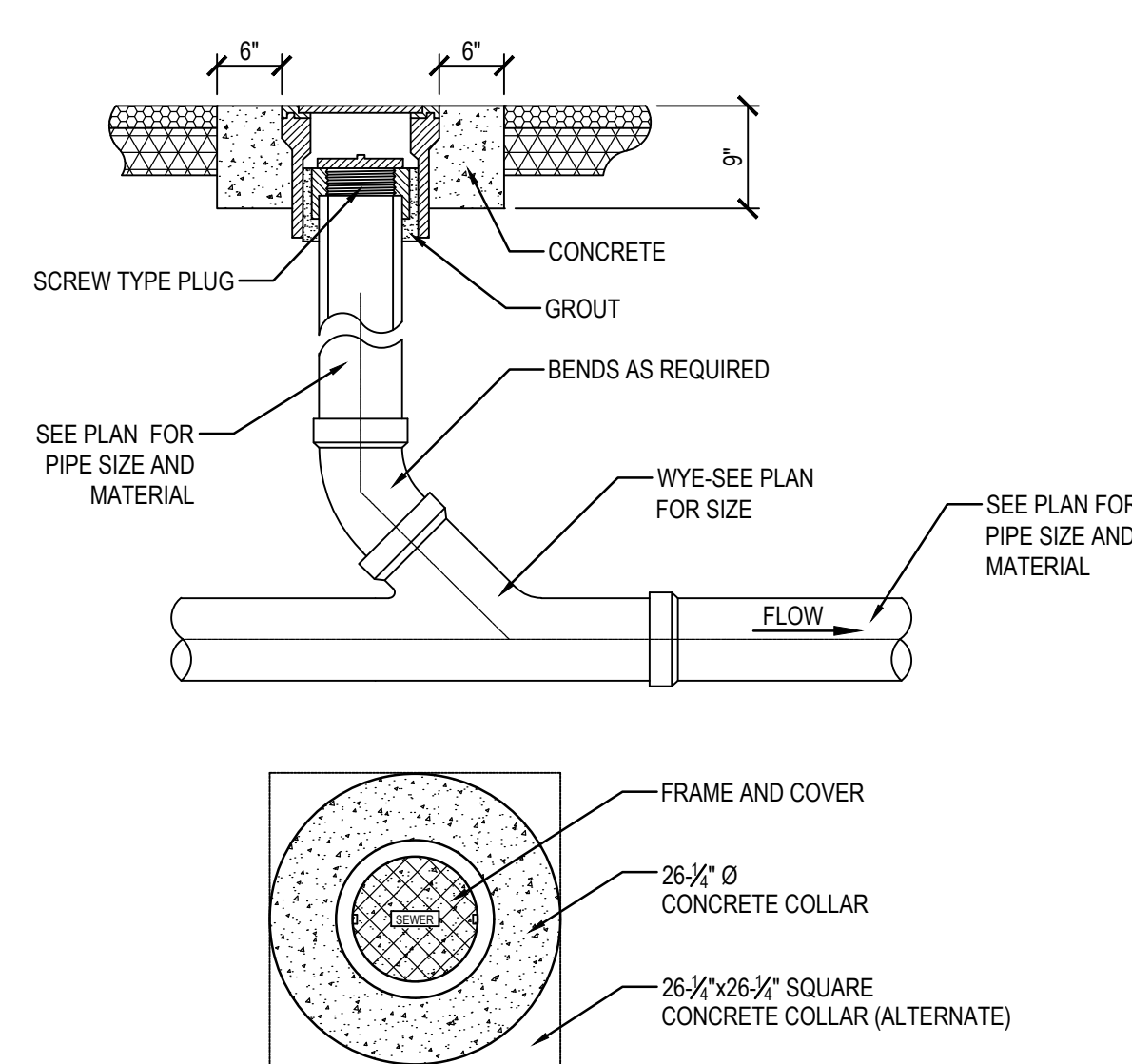
DETAIL NOT TO SCALE



- NOTES:
- MAX. SERVICE LINES: 24" RCP THRU 180°, 18" RCP THRU DOWN TO 90°.
 - PIPES MUST NOT BE IN CONSTRUCTION JOINT.
 - PIPES SHALL BE FLUSH WITH INSIDE WALL.
 - CONCRETE DESIGN STRENGTH 4000 PSI.

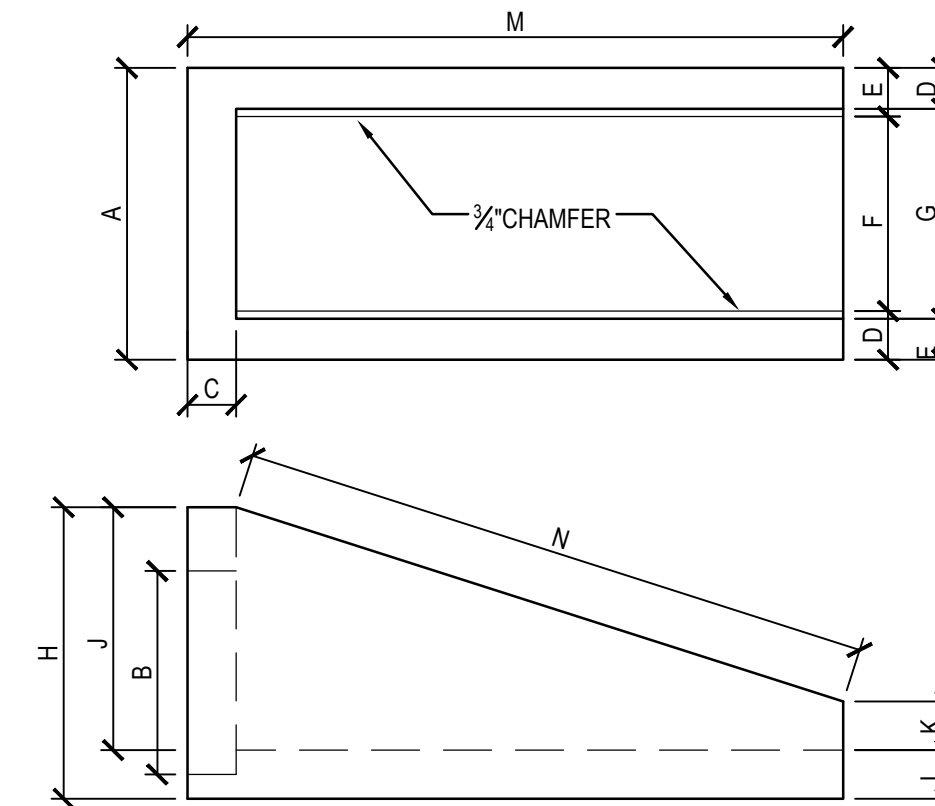
A1 STORM MANHOLE DETAIL

DETAIL NOT TO SCALE



A2 DRAINAGE CLEANOUT DETAIL

DETAIL NOT TO SCALE

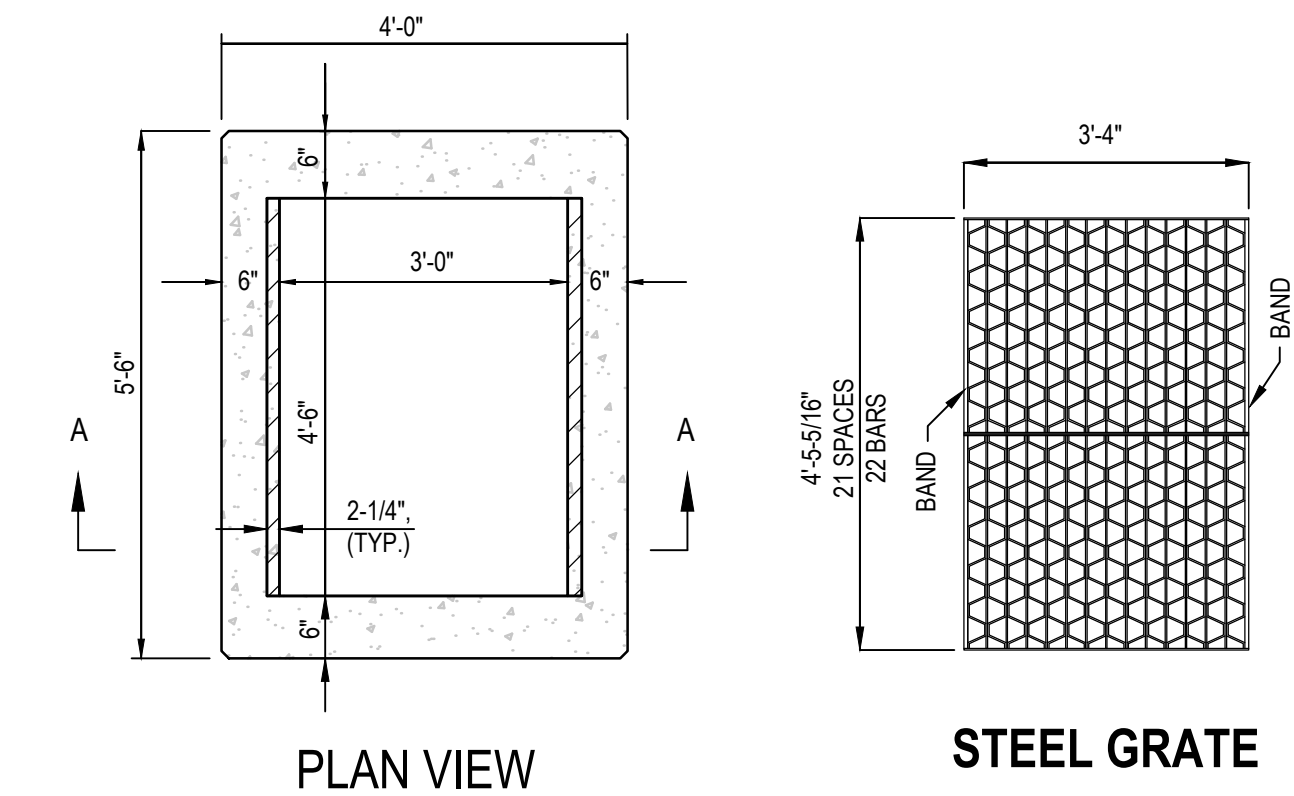


MATERIALS:
CONCRETE: 4,000 P.S.I., TYPE II CEMENT
REINFORCING: PER MANUFACTURING RECOMMENDATION
#6 BARS OVER OPENING (OPTIONAL)
ALL EXPOSED EDGES TO HAVE 1/2" CHAMFER

PIPE SIZE	A	B	C	D	E	F	G	H	J	K	L	M	N
15"-18"	2'-7"	2'-1"	6"	6"	6 3/4"	1'-6"	1'-7"	2'-10"	2'-4"	8"	6"	6'-10"	7'-0"
24"	2'-11"	2'-8"	6"	6"	6 3/4"	1'-11"	2'-0"	3'-6"	3'-1"	7'-1/2"	5"	10'-0"	10'-3 1/2"
30"	3'-6"	3'-2"	6"	6"	6 3/4"	2'-5"	2'-6 1/2"	3'-9"	3'-5"	7"	5"	11'-5"	11'-8 1/4"
36"	4'-1"	3'-10"	6"	6"	6 3/4"	2'-9"	3'-0"	4'-6"	4'-0"	6"	6"	14'-0"	14'-4 1/2"

A3 MITERED END SECTION DETAIL

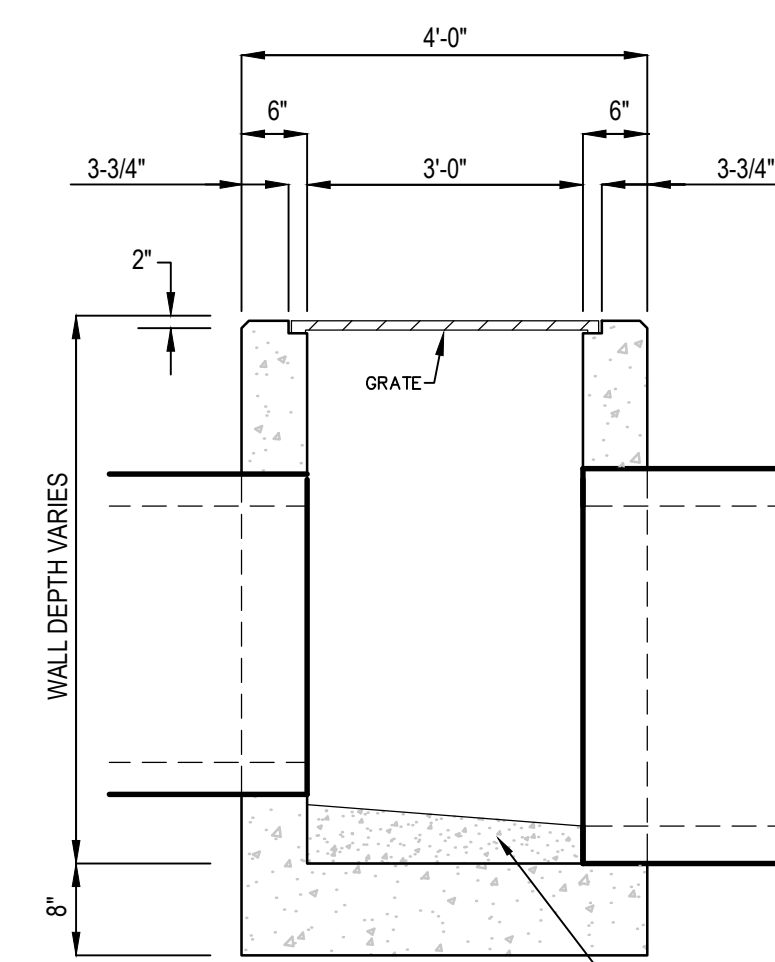
DETAIL NOT TO SCALE



PLAN VIEW

STEEL GRATE

STRAIGHT BARS 2" x 1/4"
RETICULINE BARS 1-1/4" x 3/16"
BANDS 2" x 1/4"
APPROX. WEIGHT 215 LBS.



SECTION AA

RECOMMENDED MAXIMUM PIPE SIZE:
3'-0" WALL - 24" PIPE
4'-6" WALL - 36" PIPE

SEE GRADING AND DRAINAGE PLAN FOR ORIENTATION OF CATCH BASIN AND CONSTRUCTION INFORMATION PERTAINING TO PIPE MATERIAL, SIZE, INVERT ELEVATIONS, & GRATE ELEVATIONS.

A4 TYPICAL PRE-FABRICATED CATCH BASIN & GRATE

DETAIL NOT TO SCALE

HASKELL ARCHITECTS and ENGINEERS, P.C.
CONNECTICUT - Architecture and Engineering # 0000056

HASKELL

The Haskell Company
111 Riverside Avenue
Jacksonville, Florida 32202
Phone # (904) 791-4500

YELLIN TRAILER PARKING LOT



No	DESCRIPTION	DATE
K	CRPI	03/12/21
I	CPI_EVER	02/16/21
G	CPI	01/21/21

We hereby expressly reserve the property rights to this drawing and it is not to be reproduced, copied in any format or manner whatsoever without first obtaining our express written permission and approval.

DRAWN BY: SBC/MSL
CHECKED BY: JRH

AE JOB NUMBER: 3401365

GRADING AND DRAINAGE DETAILS

1C-540
SHEET NUMBER

