

TOWN OF KILLINGLY

ENGINEERING DEPARTMENT

PROPOSED DREDGING OF OWEN BELL PARK POND

PROJECT NARRATIVE

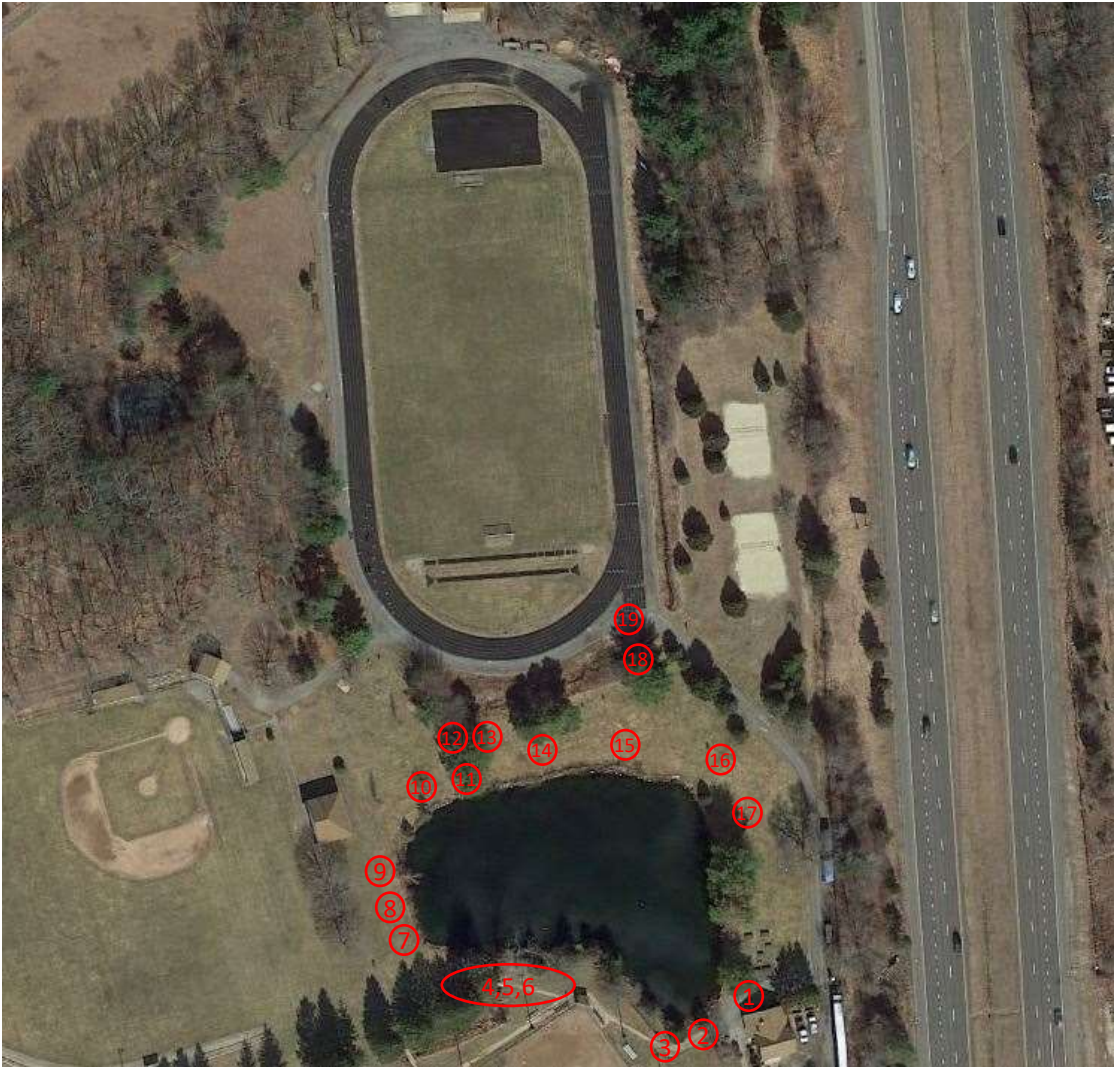
Owen Bell Park Pond is approximately 1.20 acres and has a maximum depth of 4 ½ feet. The existing volume of the pond is approximately 1.31 Million Gallons. The pond is fed via an intermittent stream which is piped under Route 395, through two vegetated swales, and then into the pond via a 24” Reinforced Concrete Pipe. The pond has a weir type outlet structure conveying a small stream to the south west, ultimately flowing into the 5 Mile River via a stone box culvert approximately 3,000 feet.

The pond is currently used to store water which is used for irrigating one baseball field, one softball field, and one soccer field. In recent years passed, the pond has become nearly dry, which obviously creates challenges for irrigation during the dry summer months as well as foul odors and unsightliness for the numerous visitors. The pond currently has no permitted recreational use, and there are no future plans to do so.

The purpose of dredging Owen Bell Park Pond is to remove several feet of sediment to allow for more storage volume. The dredging should be considered a rehabilitation, considering the intent is to restore the pond back to its original condition. The proposed dredging design shows a 10,000 square foot increase in surface area to accommodate more storage. Side slope benching for safety reasons has been incorporated. The dredging would increase the pond’s surface area to approximately 1.40 acres (+0.20 AC) & volume to approximately 3.66 Million Gallons (+2.35 Million Gal.).

It is anticipated that construction would begin in the 2023 construction season.

TOWN OF KILLINGLY
PROPOSED DREDGING OF OWEN BELL POND
EXISTING CONDITIONS PHOTO LOG
MARCH, 2023



*Red Circled Numbers Correspond with Photos & Associated Captions



1. Standing at Concession Stand, Looking North–West



2. Information Board, Southern Edge of Pond Looking North



3. Southwest Edge of Pond, Looking Northwest. Along Chain Link Fence to Rear of Softball Field



4. Pond Outlet/Weir Structure. Looking North Towards Pond



5. Standing at Pond Outlet Looking North



6. Standing at Outlet Looking South Down Swale



7. Western Edge of Pond, Looking North



8. Western Edge of Pond, Looking East



9. Groundwater Monitoring Well #3, Western Edge of Pond



10. Northern Edge of Pond Looking East, Trees to be Removed, & Proposed Pond Surface Extension



11. Inlet to Pond. Spigot End of 24" RCP (Submerged & Broken)



12. Standing in Drainage Swale North of Pond, Looking South.
24" Flared End Section From Swale to Pond Inlet



13. Looking South. Groundwater Monitoring Well #2, Northern Edge of Pond



14. North Eastern Edge of Pond Looking West Towards Trees to be Removed & Area of Proposed Pond Surface Expansion



15. Groundwater Monitoring Well #1, Eastern Edge of Pond



16. Eastern Edge of Pond Looking South Towards Restrooms & Concession



17. Eastern Edge of Pond Looking West



18. Drainage Swale Flowing to Pond & Spigot End of 24" RCP



19. Existing Walking Track, Soccer Field, & Proposed Dewatering Area