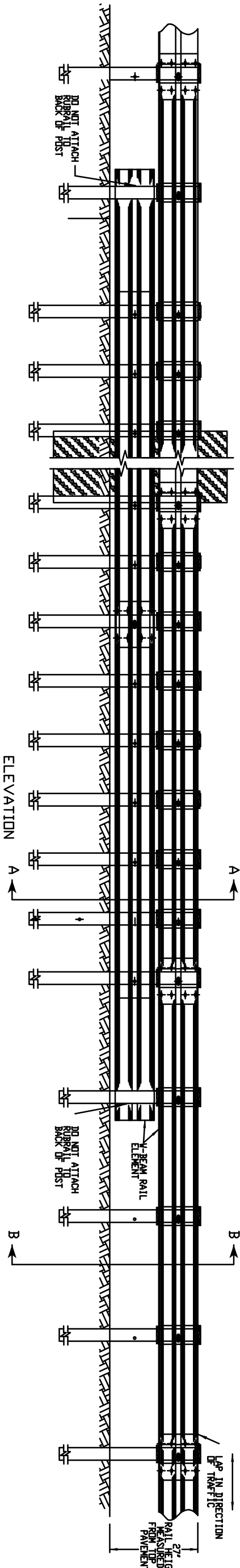


PLAN



TREATMENT OF METAL BEAM RAIL R-B 350 SYSTEM 6 AT FIXED OBJECTS  
(FOR OTHER TREATMENTS, SEE TABLE 1)

- GENERAL NOTES.
1. WHEN DESIGNING STRENGTH TRANSITION FOR AN UNDIVIDED BI-DIRECTIONAL ROADWAY, MIRROR THE STRENGTH TRANSITION ON THE TRAILING END.
  2. SEE MISCELLANEOUS CONNECTION DETAIL FOR METAL BEAM RAIL HARDWARE ELEMENTS.
  3. WHERE CURBING IS USED, MEASURE RAIL HEIGHT FROM TOP OF PAVEMENT. TOP RAIL FACE SHALL BE PLACED FLUSH WITH FACE OF CURB FOR HIGH SPEED > 50 MPH ROADWAYS.
  4. RUBRAIL FLARED SECTION SHALL BE SHIP BENT AND GALVANIZED AFTER FABRICATION AND INCLUDED IN THE CONTRACT UNIT PRICE PER FOOT FOR R-B 350 SYSTEM 6" (TYP.)
  5. R-B 350 SYSTEM 5 & 6 INSTALLED ON LIMITED ACCESS HIGHWAYS AND RAMP'S SHALL USE CLASS B TYPE II (< 10 GAUGE) V-BEAM RAIL ELEMENTS.
  6. PRIOR TO GUIDE RAIL INSTALLATION, CONTRACTOR SHALL CONTACT  
, CALL BEFORE YOU DIG AT 1-800-922-4455

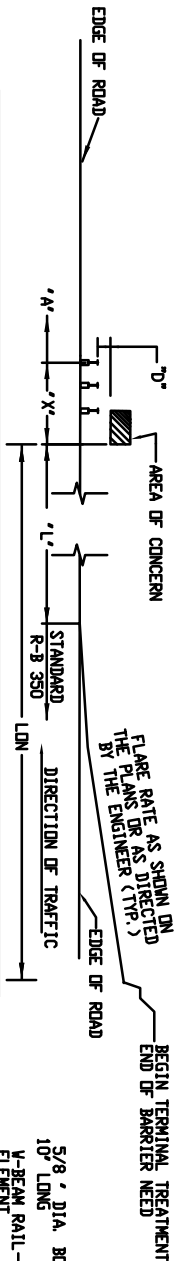
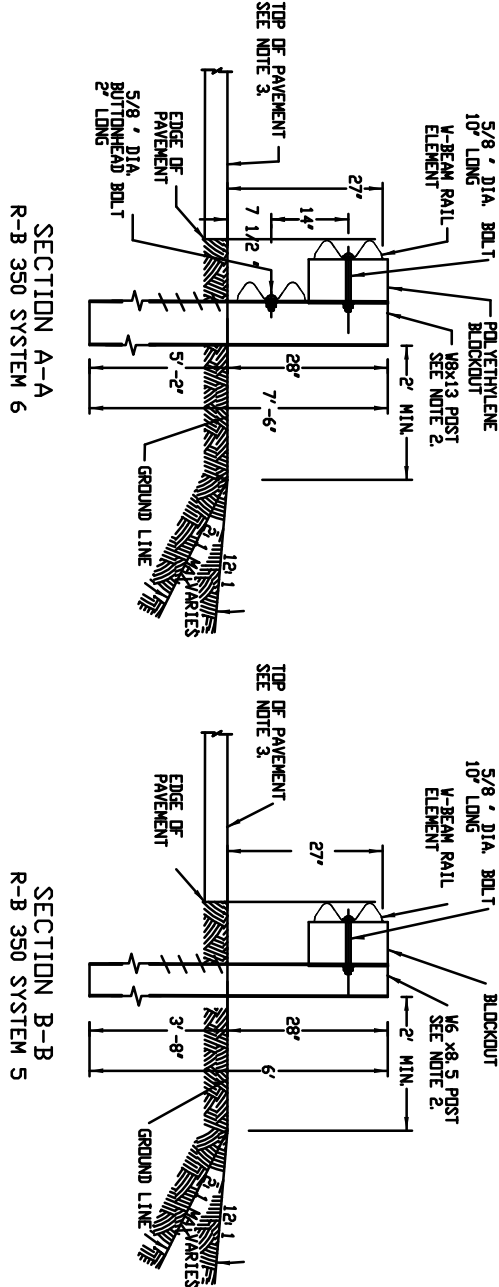


TABLE 1 STRENGTH TRANSITION FOR METAL BEAM RAIL (TYPE R-B 350) AT FIXED OBJECTS, BRIDGE PIERS, AND ABUTMENTS ON THE ROADSIDE OR MEDIAN.				
'D'	'X'	R-B 350 SYSTEM 6	R-B 350 SYSTEM 5	'L'
MAXIMUM DESIGN DEFLECTION	AREA OF CONCERN PLUS TWO POSTS	W8 x 13 POSTS SPACED AT 1'-6 3/4'	W6 x 8.5 POSTS SPACED AT 1'-6 3/4'	MINIMUM LENGTH
1.82'	SYSTEM 6	12'-6"	25'	25'
2.64'	SYSTEM 5	12'-6"	25'	25'

L = MINIMUM LENGTH OF RAIL NEEDED IN FEET PRIOR TO THE HAZARD.  
X = MINIMUM LENGTH THRU AREA OF CONCERN. 'X' WILL VARY DEPENDING ON LENGTH OF AREA OF CONCERN.  
D = MAXIMUM DESIGN DEFLECTION MEASURED FROM THE BACK OF POST TO THE FACE OF AREA OF CONCERN. FOR BRIDGE PIERS OR SIGN SUPPORTS A MINIMUM OF 6" IS WARRANTED, LESS THAN 6" REQUIRES BARRIER. DO NOT USE SYSTEM 5 AND 6 FOR THIS PURPOSE.  
LON = LENGTH OF NEED FOR EACH SITE SHALL BE BASED ON CTDOT HIGHWAY DESIGN MANUAL.  
A = IF AREA OF CONCERN IS PROTECTED WITH SYSTEM 6, A MINIMUM OF 2 SPACES AT 3'-1 1/2" IS REQUIRED BEYOND THE HAZARD. IF AREA OF CONCERN IS PROTECTED WITH SYSTEM 5, CONTINUE WITH STANDARD R-B 350 GUIDERAIL.



DESIGNER	DRAFTER		STATE OF CONNECTICUT DEPARTMENT OF TRANSPORTATION		OFFICE OF ENGINEERING	PROJECT TITLE: KILLINGLY STANDARD DRAWINGS	TOWN: KILLINGLY	PROJECT NO.:
1. REV. DATE	ADDED NOTE # 6 TO GENERAL NOTES.		DESCRIPTION		CHECKED BY:	ENGINEER TOWN OF KILLINGLY	DRAWING TITLE: MISCELLANEOUS CONNECTION DETAIL METAL BEAM RAIL (TYP) R-B 350 SYSTEM 5 & 6)	DRAWING NO.:
REVISIONS	SHEET: NDL		DATE CHECKED:		DATE:	DATE:	PLOTTED	SHEET NO.:
								1 OF 4