

no.	description	date
	progress	
22_0127		
22_0411		
22_0531		
22_0611		

These drawings are instruments of service only for use in this project. Dimensions and existing conditions must be field verified by contractor with understanding that any discrepancies will be submitted as written notices to the architect.

consultants:

Initial Studies Progress

543 Wauregan Rd. Killingly, CT

project
Melting Point Welding & Fabrication Shop

peaslee architect pc

648 rt. 198
woodstock valley, ct 06082
716 383 8909
917 845 3465 c
design@stuartpeaslee.com

A-100.00

© 2022 all rights reserved

22-1291 MEETING POINT

project information

This remodeling / addition project consists of changes in use relevant with transforming a 22,000 sf retail-storage commercial bldg. to an industrial production facility. There will be structural modifications to the existing framework to handle operations sufficiently without change to the existing building envelope. A small addition is proposed to enhance logistical and material handling procedures at the existing service driveway off of Lucienne Ave.

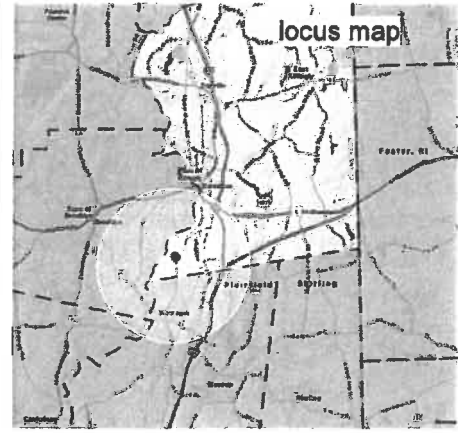
Occupancy Class "LI"
Constr. class fireproof I.

New interior remodeling levels 1-2: (see drawings for proposed layout)
Note: These drawings are in Design Development Phase, details are in progress.

District: Landmark: no

Addition Scope of Work:

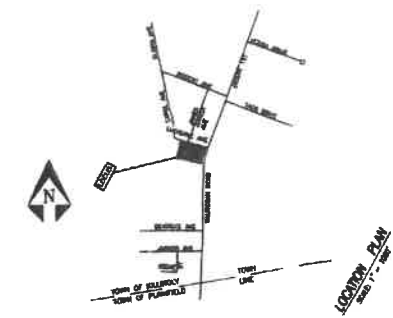
Site preparation for adding a 25' wide vegetation buffer in parking lot and new addition, sign maintenance, excavation for sub-structure concrete foundation, superstructure to consist of steel framing, light ga. stl framing, mineral fiber insulation, gyp bd and metal cladding; to be determined.



no scale

property information

Block Lot # 282-20 unique ID 4088
Zone: LI 2.10 Ac
Retail / Warehouse - Discount Store
Flood Hazard Zone: C
Reference 542 Wauregan Rd Drwg # 5307 / 2004



legend

partition - new
partition - demo
partition - exstg
overhead
view ref# 1 / A101
Room name
150 SF
View Name
1/8" = 1'-0"
north
revision
Legend 1
1/4" = 1'-0"

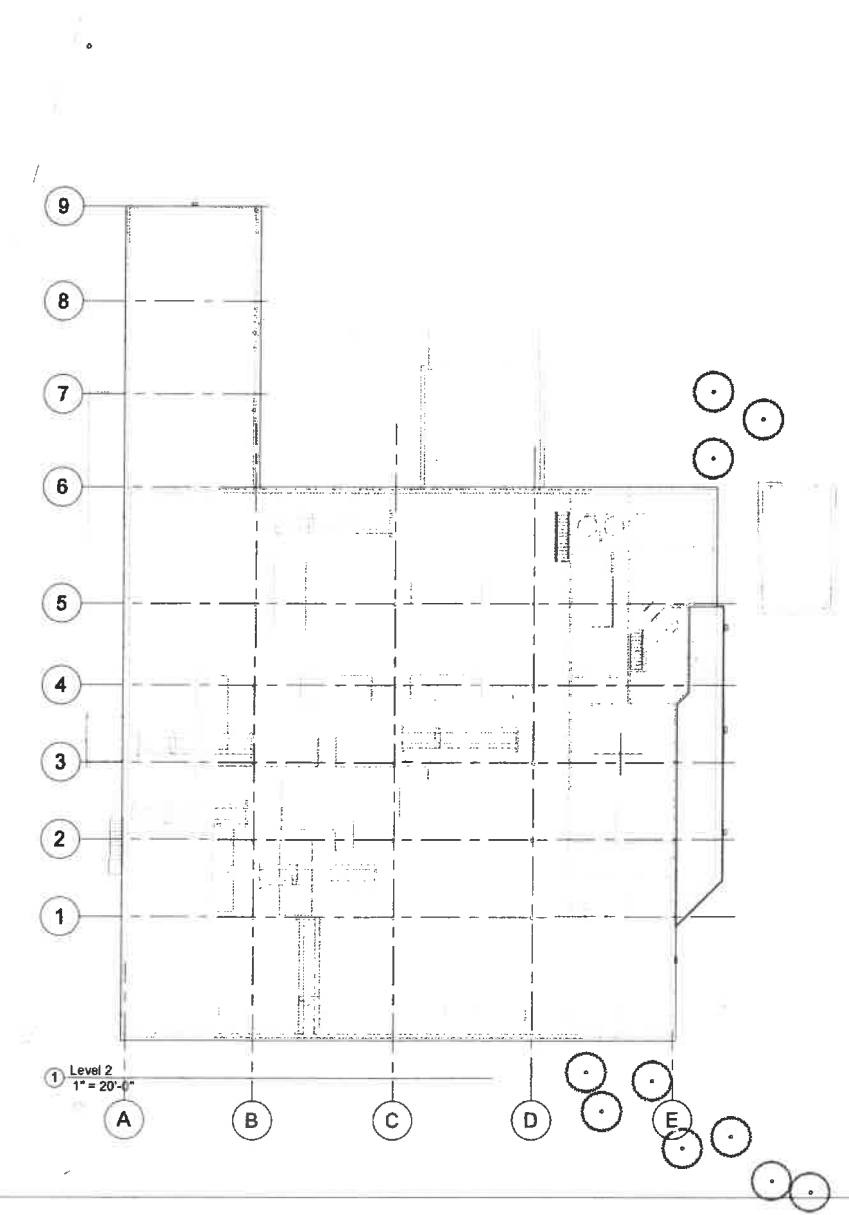
preview studies drawings list

- A - 001 - Cover Page
- A - 100.01 - Site Plan (reference #5307)
- A - 101 - Floor Plans
- A - 102 - Elevations
- A - 103 - Sections

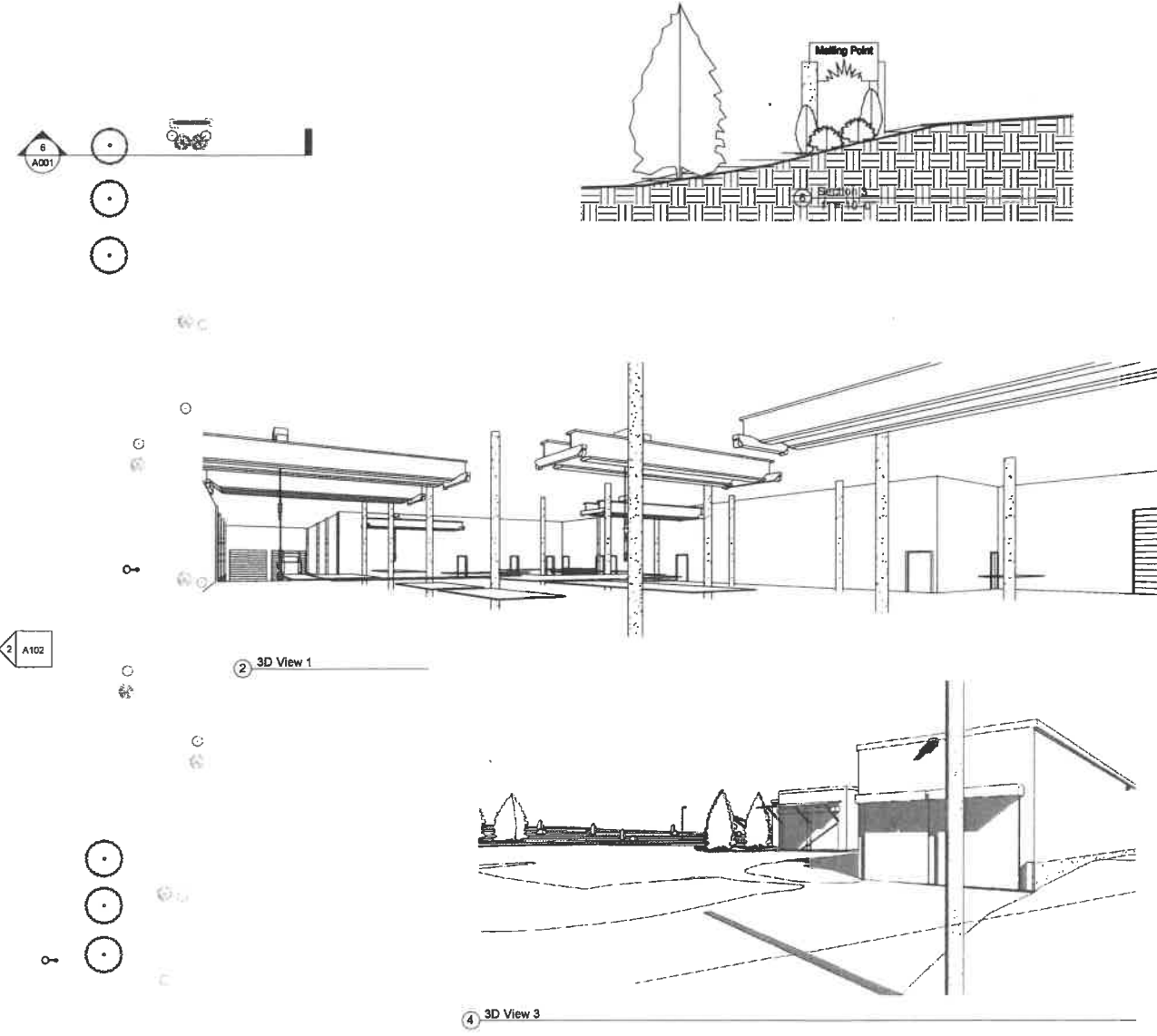
no.	description	date
	progress	
22_0127		
22_0411		
22_0531		
22_0611		

These drawings are instruments of service only for use in this project as preliminary studies only. Dimensions and existing conditions must be field verified with any discrepancies to be submitted as written notices to the architect.

project notes / na



general construction / na



consultants:

Initial Studies
Progress

543 Wauregan Rd.
Killingly, CT

project
Melting Point
Welding & Fabrication
Shop

peaslee architect pc

646 46 168
718 353 8820
design@peaslee.com

A - 001

#22-1891 MELTING POINT

no.	description	date
	progress	
	22_0127	
	22_0411	
	22_0531	
	22_0611	

These drawings are instruments of service only for use in this project. Dimensions and existing conditions must be field verified by contractor with understanding that any discrepancies will be submitted as written notices to the architect.

consultants:

Initial Studies

543 Wauregan Rd.
Killingly, CT

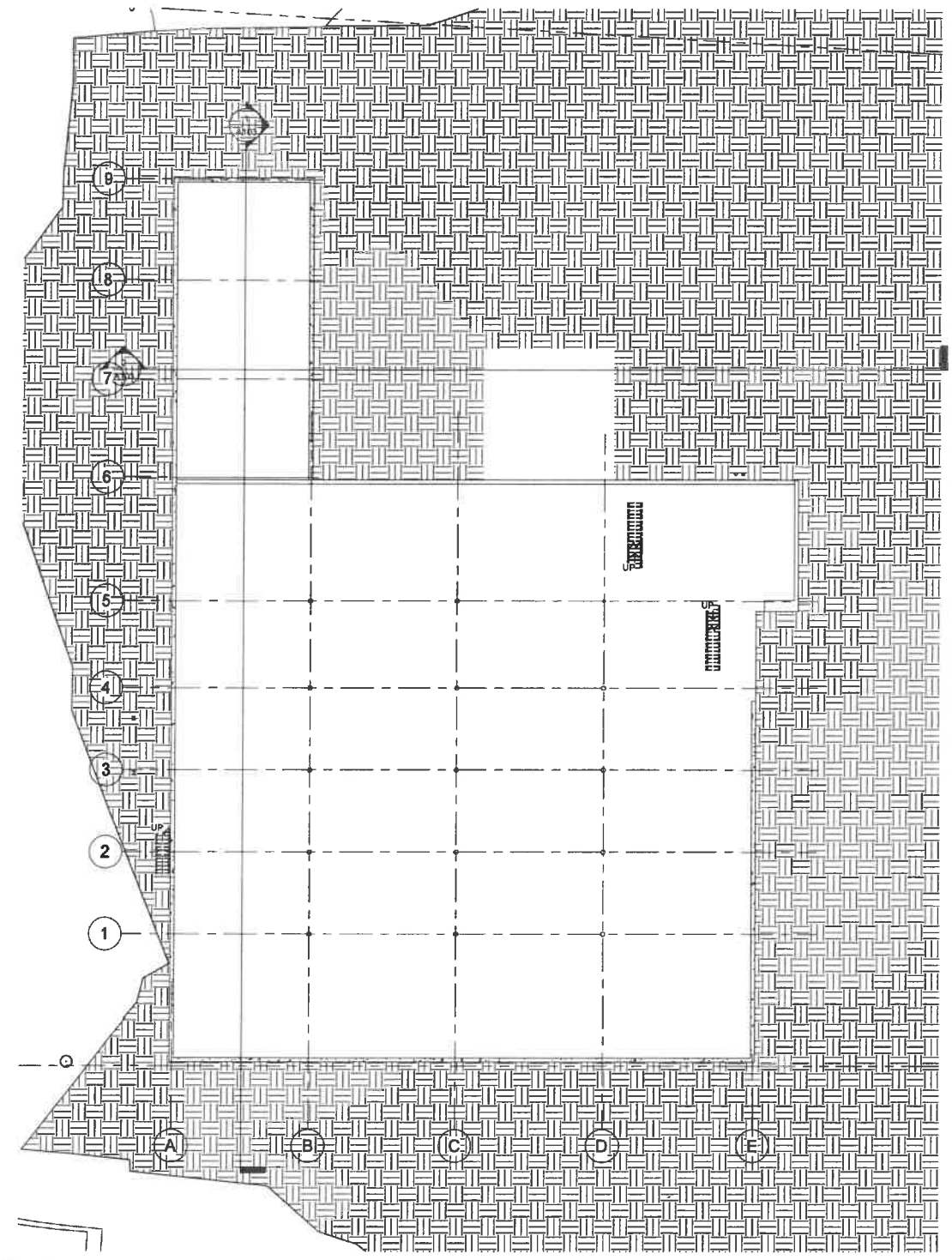
project
**Melting Point
Welding & Fabrication
Shop**

peaslee architect pc

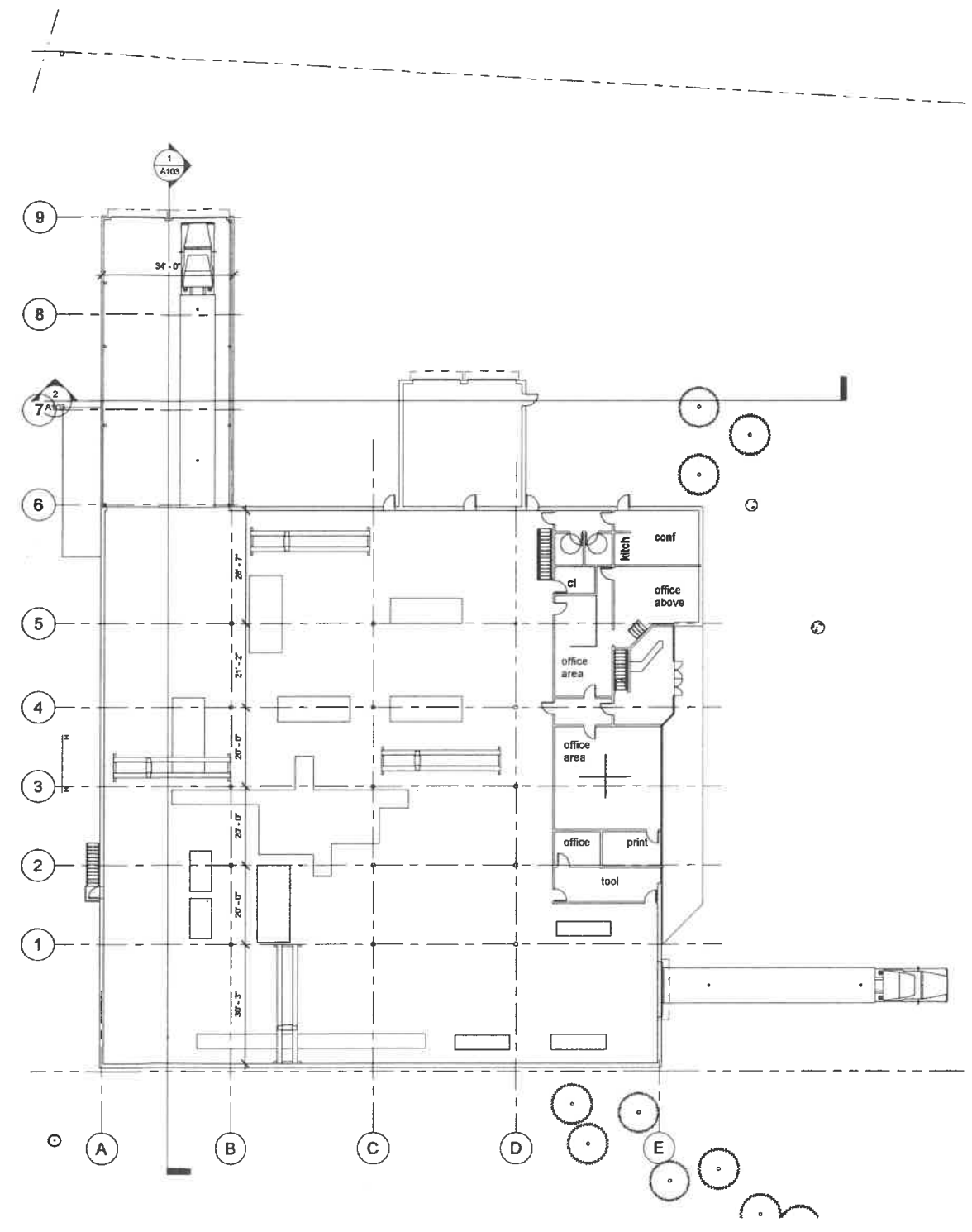
648 rte 198
woodstock valley, ct
06282
716 383 8809
917 945 3455 c
sign@stuartpeaslee.com

A-101.00
© 2022 all rights reserved

#22-1091 MELTING POINT



2 Cellar
1/16" = 1'-0"



1 Level 1
1/16" = 1'-0"

no.	description	date
	progress	
	22_0127	
	22_0411	
	22_0531	
	22_0611	

These drawings are instruments of service only for use in this project. Deviations and existing conditions must be field verified by contractor with understanding that any discrepancies will be submitted as written notices to the architect.

consultants:

Initial Studies

543 Wauregan Rd.
Killingly, CT

project
Melting Point
Welding & Fabrication
Shop

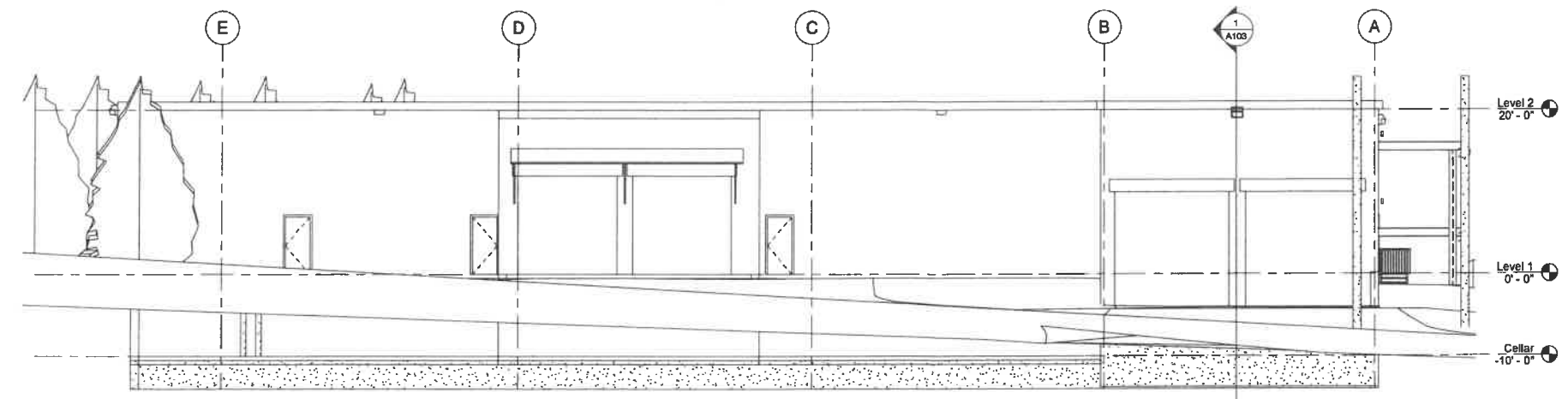
peaslee architect pc

648 rte 198
woodstock valley, ct
06282
716 383 8909
617 945 3465 c
design@stuartpeaslee.com

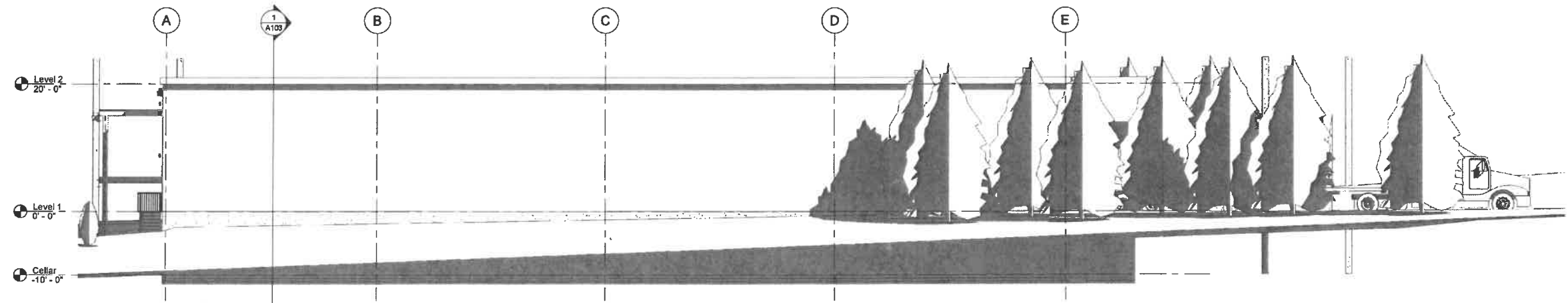
A-102.00

© 2022 all rights reserved

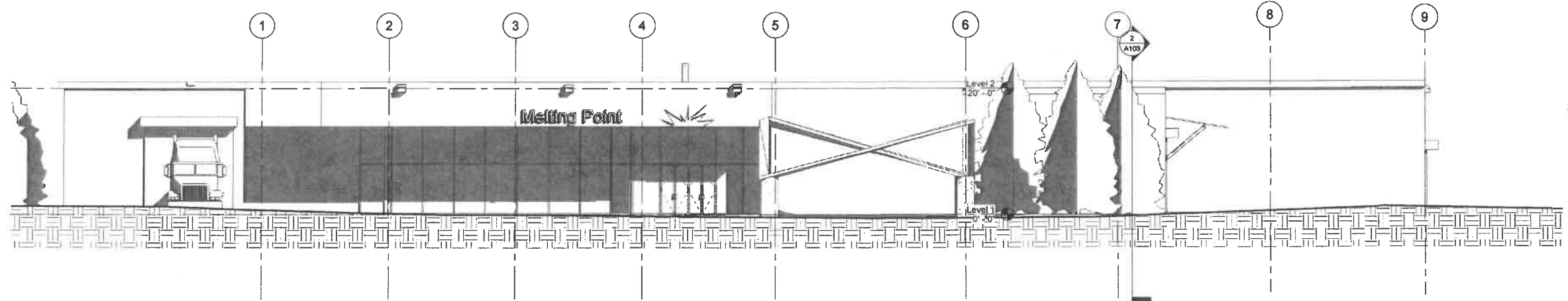
22-1291 MELTING POINT



3 West
1/8" = 1'-0"



1 East
1/8" = 1'-0"



2 North
1/8" = 1'-0"

no.	description	date
22_0127		
22_0411		
22_0603		
22_0611		

These drawings are instruments of service only for use in this project. Dimensions and existing conditions must be field verified by contractor with understanding that any discrepancies will be submitted as written notices to the architect.

consultants:

Initial Studies

543 Wauregan Rd.
Killingly, CT

project
Melting Point
Welding & Fabrication
Shop

peaslee architect pc

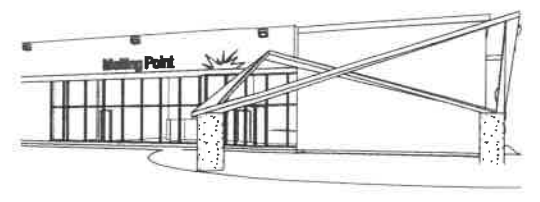
648 rte 198
woodstock valley, ct
06282
718 383 8909
917 945 3455 c
design@peaslee.com

A-104.00

© 2022 all rights reserved



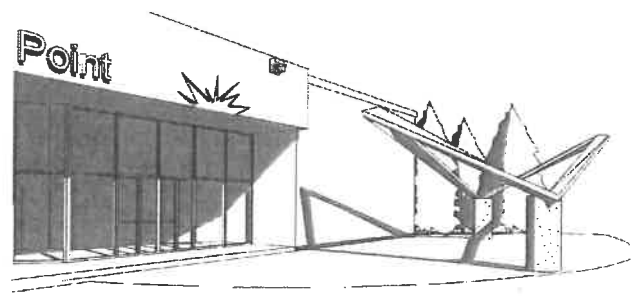
3 3D View 5



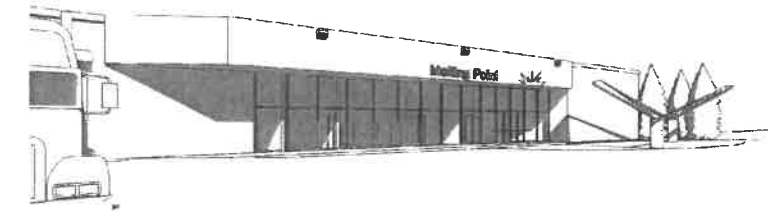
4 3D View 6



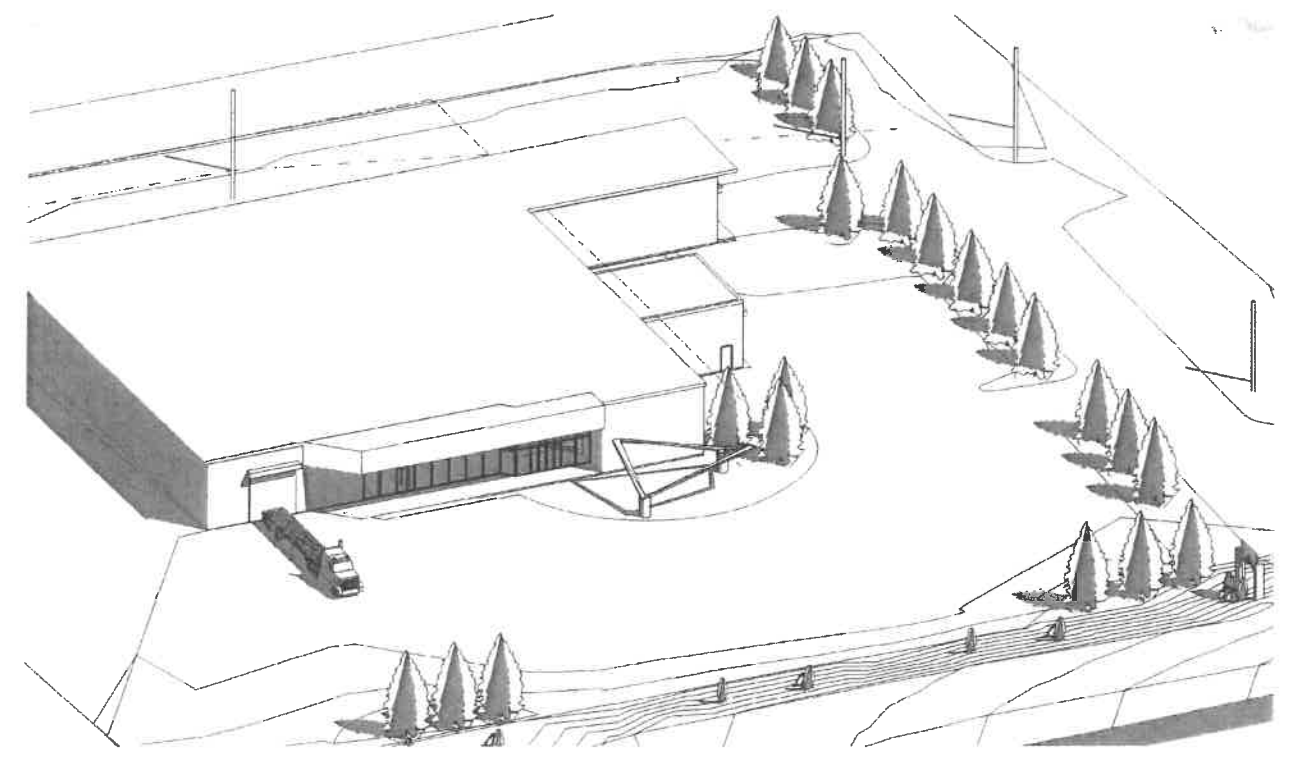
5 3D View 7



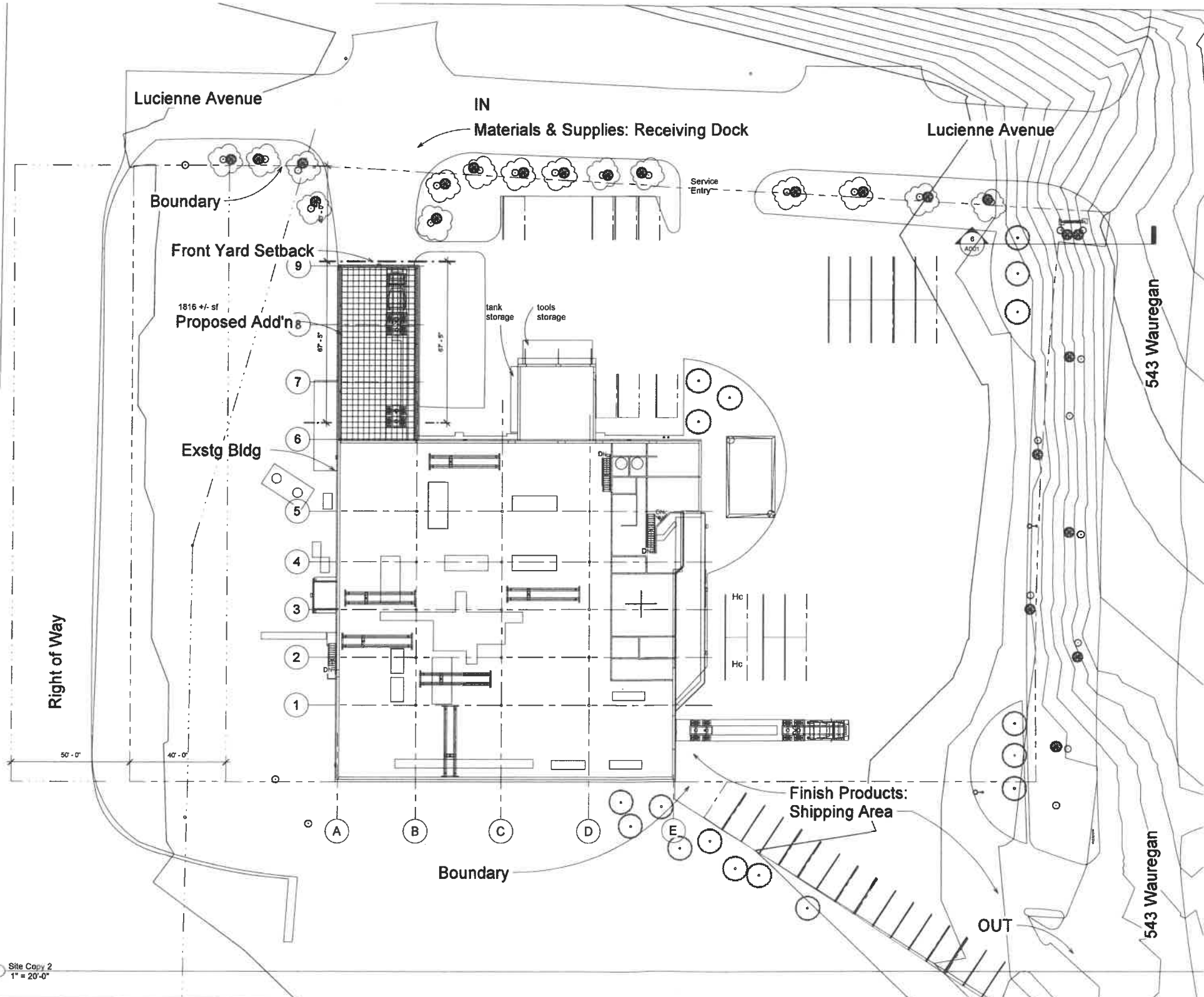
2 3D View 4



1 3D View 2



22-1291 MELTING POINT



1 Site Copy 2
1" = 20'-0"

no.	description	date
22_0615		

These drawings are instruments of service only for use in this project. Dimensions and existing conditions must be field verified by contractor with understanding that any discrepancies will be submitted as written notices to the architect.

consultants:

Initial Studies -
Parking Layout

543 Wauregan Rd.
Killingly, CT

project

Melting Point
Welding & Fabrication
Shop

peaslee architect pc

648 rt. 198
woodslock valley, ct
06262
718 383 8909
917 945 3485 c
info@peaslee.com

A-105.00

© 2022 all rights reserved

22-1291 - MELTING POINT

543 Wauregan Road

Legend

 543 Wauregan Rd

INFILL EXISTING SHRUBS WITH SIMILAR (WAX MYRTLES) OR EQUIV. AND ADD ADDITIONAL SHRUBBERY ALONG LUCIENNE AVE.

1816 SQ. FT. +/- ADDITION RECEIVING DOCK

EXISTING FREE STANDING SIGN TO BE REPLACED WITH NEW "MELTING POINT" BUSINESS SIGN

SCULPTURE PAVILION
NEW LANDSCAPED AREA

NEW EXPORT DOCK

RECLAIM ADDITIONAL LANDSCAPE AREA. PLANT NEW THUJA GREEN GIANTS OR LEYLAND CYPRESS. EXISTING LANDSCAPING TO REMAIN AND BE ENCHANCED ALONG ROUTE 12. EXISTING POLE MOUNTED LIGHTING TO REMAIN.

